

evonos



evoShape PATIENT-SPECIFIC PEEK IMPLANT

100% reliability – down to the smallest detail.

evoShape, our PEEK implant for cranial reconstruction is designed to fit perfectly with your patient's anatomy – and with the way you work. In collaboration with neurosurgeons, we design and produce top-quality cranial implants that require no intraoperative adaptation and are easy to fix – making operations faster and more successful.

Excellent aesthetic combined with protective functionality

We design and manufacture an optimally fitting cranial implant using high-resolution CT data, while maintaining close coordination with you. Our process incorporates a high-precision CNC-controlled 5-axis milling technology to ensure accuracy in all areas, including the edges of the implant.

Ready to use

The implant arrives sterile and ready to use. If the implant becomes unexpectedly contaminated during surgery, it can be easily sterilized on-site once again.

PEEK

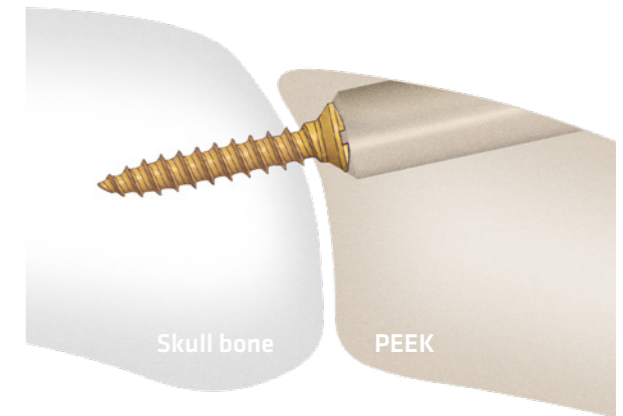
Each evoShape implant is made of polyether ether ketone (PEEK), a high-performance thermoplastic with low temperature sensitivity. The material is strong but not brittle and can be adapted with available tools if necessary. Furthermore, PEEK reduces the risk of infection for the patient, thereby supporting wound healing.

Compatibility

The lightweight PEEK material makes evoShape the ideal skull bone replacement when it comes to large, complex reconstructions. It also allows a nearly artifact-free medical imaging.

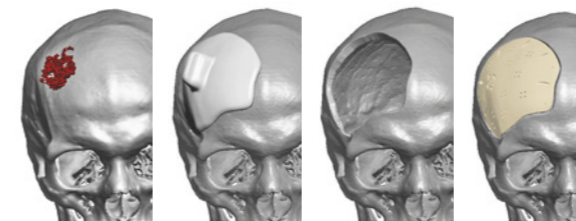
Gentle and easy to fix

Each evoShape implant is provided with pre-drilled fixation holes, which make it easier for surgeons to fix quickly and securely. The choice is yours: opt for our innovative, patented tangential screw fixation method, where the implant is directly secured to the adjoining bone, or choose the classic approach with micro plates and the accompanying micro screws, such as our evoFix system. Also well thought out and very useful: The design includes strategically placed perforations for a secure fixation of the dura, temporal muscle and surrounding soft tissue.



From the everyday to the exceptional

While we excel at performing everyday procedures to the highest standard, we also specialize in assisting surgeons with exceptionally complex cases, including multi-plate implants. When standard implants fall short, we push beyond boundaries. Our team possesses a profound understanding of the human anatomy and distinguishes itself with comprehensive design expertise, demonstrated by our successful execution of numerous complex cases.



One-step procedure

Thanks to many years of experience in designing and manufacturing cranial implants we are your reliable partner for the one-step procedure. Simply share your intended incision with us, and we will create a precise cutting template and a perfectly fitting implant. This allows both steps to be completed in a single operation.

Implants designed for a perfect match

Utilizing CT data and working closely with you, we develop an initial implant proposal that carefully considers the patient's unique circumstances, including factors such as skin condition, soft tissue, and inflammation. Upon approval, we promptly produce and deliver the implant within your required time frame. In cases of special procedures or emergencies, the delivery time can be further shortened to meet urgent needs.



 **MADE IN GERMANY** | Find more on [evonos.de](https://www.evonos.de)



evonos GmbH & Co. KG · Stockacher Str. 134 · 78532 Tuttlingen · Germany
Phone: +49 7461 96 57 74 0 · Fax: +49 7461 96 57 74 89 · Mail: info@evonos.de

93-910035 06/2023 © Copyright by evonos GmbH & Co. KG · Errors, misprints and changes reserved.

evonos